



R&R industry quality keyboard IK810LT-02 - for harsh environment-	
housing	Einbauversion, Frontplatte Aluminium eloxiert
dimensions	(WxHxD) 180 x 180 x 30 mm
drawing	DNR21277
Controller	PS2 or USB, Watchdog, n-key-rollover
LED	RED, GREEN
Layout	35 push buttons, custom designed layout possible see pcb maximum. 5 x 7 Tasten
keys	R&R-pushbuttons, travel / actuation force 3 mm / 1N, 3 mm / 3 N or 1.2 mm / 1N Clear actuation point approx > 3 million switch cycles sealed contact and sealed guiding
Order #. (layout as shown)	2551

IK810LT-02 industry quality keyboard

Ob der Eck 4· D-78148 Gütenbach · Telefon (07723) 9186-0 · Telefax (07723)9186-30

www.rurgmbh.de info@rurgmbh.de

DNR21279_E.DOC REV.01 05.07.1996

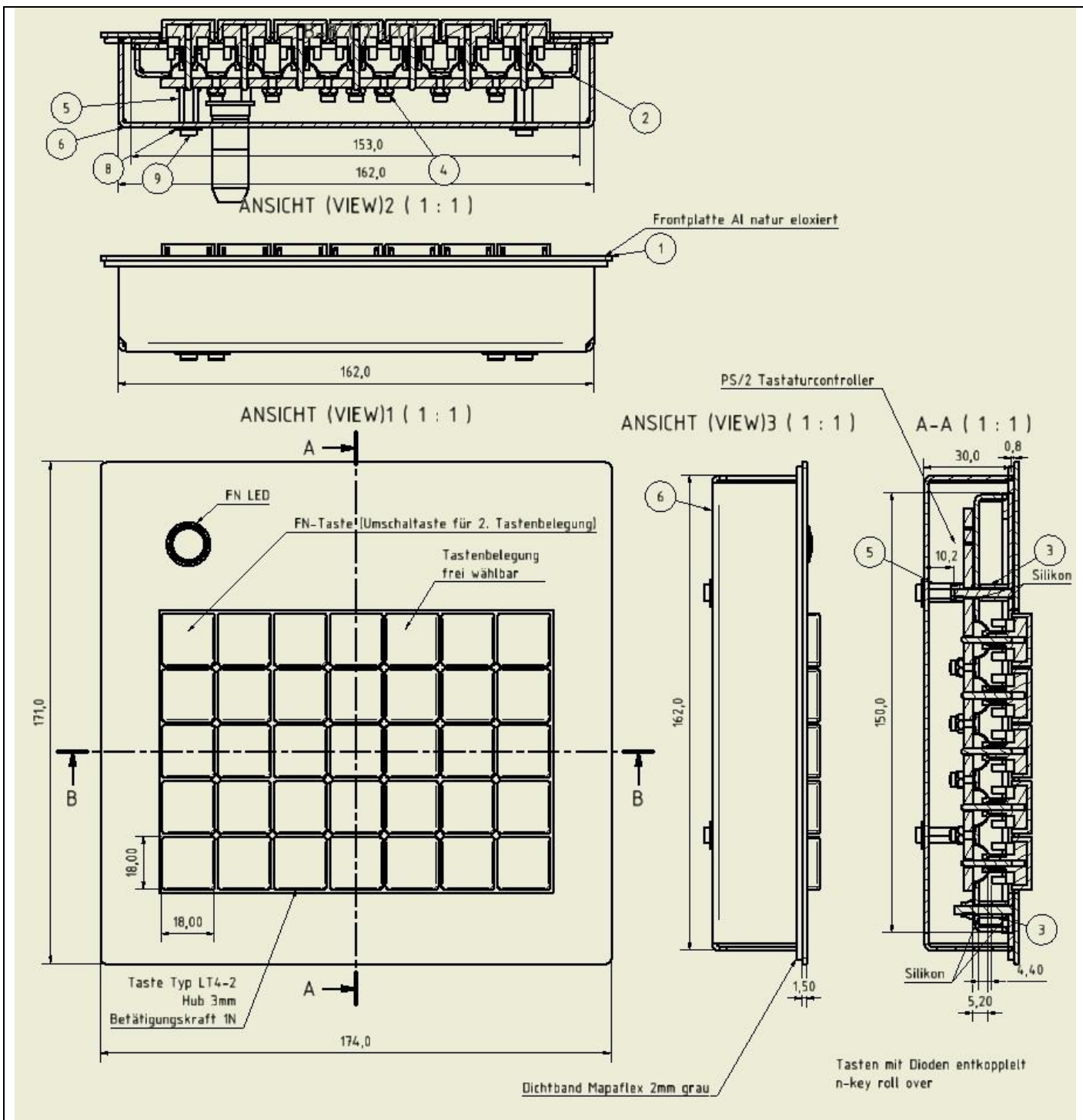


Back view with clamping bracket	
Protection class	IP 6 5 (dustproof, waterproof)
Work temperature	-30 up to +80°C
Weight	Approx.0,72 kg
cable	1,5m (standard) optional up to 30m with booster up to 100m

IK810LT-02 industry quality keyboard

Ob der Eck 4· D-78148 Gütenbach · Telefon (07723) 9186-0 · Telefax (07723)9186-30

www.rurgmbh.de info@rurgmbh.de



connector	Mini DIN 06 (PS2)
option	Silicon free version available

IK810LT-02 industry quality keyboard

Ob der Eck 4· D-78148 Gütenbach · Telefon (07723) 9186-0 · Telefax (07723)9186-30

www.rurgmbh.de info@rurgmbh.de

DNR21279_E.DOC REV.01 05.07.1996

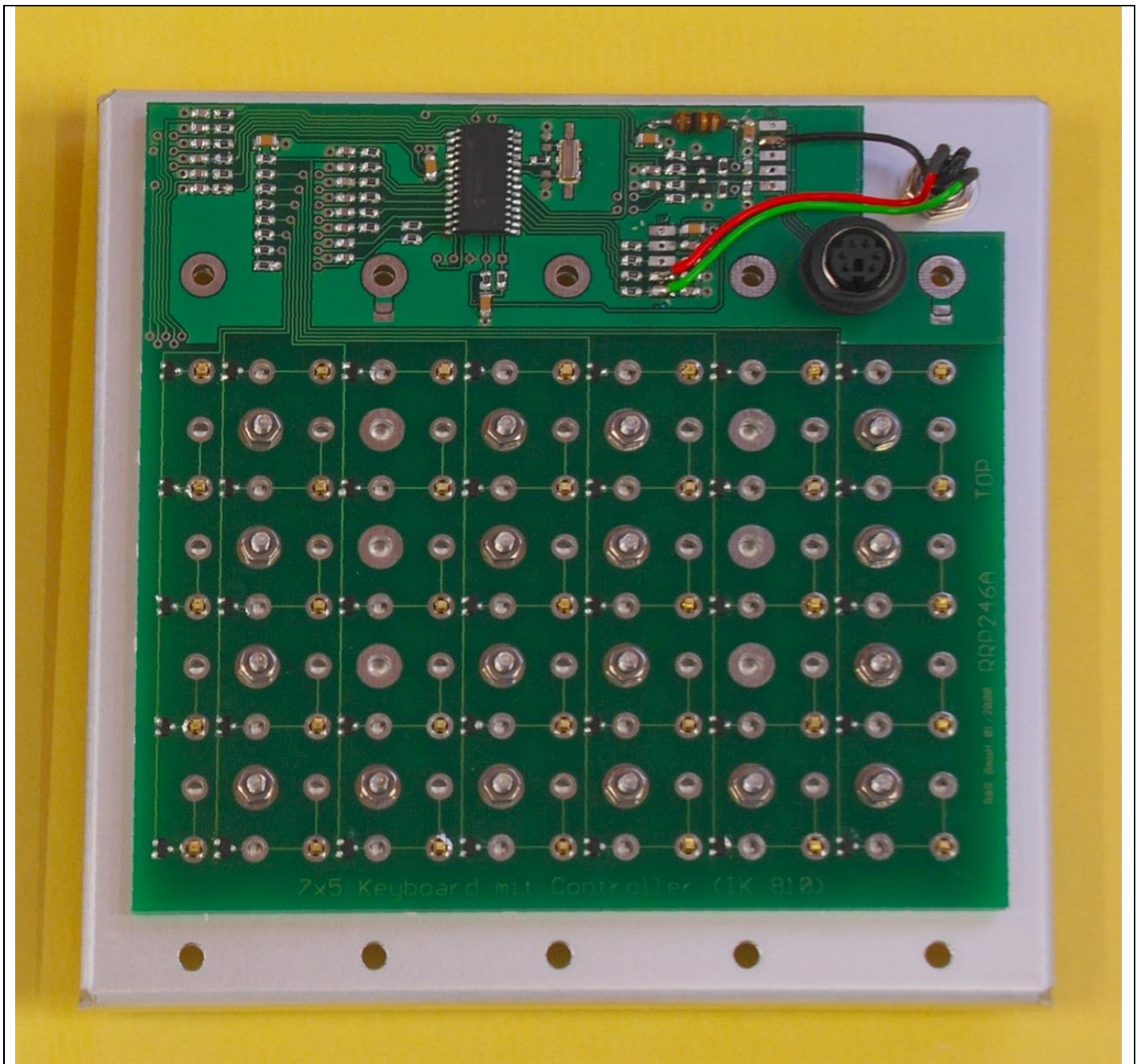


IK810LT-02 bracket device

IK810LT-02 industry quality keyboard

Ob der Eck 4 · D-78148 Gütenbach · Telefon (07723) 9186-0 · Telefax (07723)9186-30

www.rurgmbh.de info@rurgmbh.de



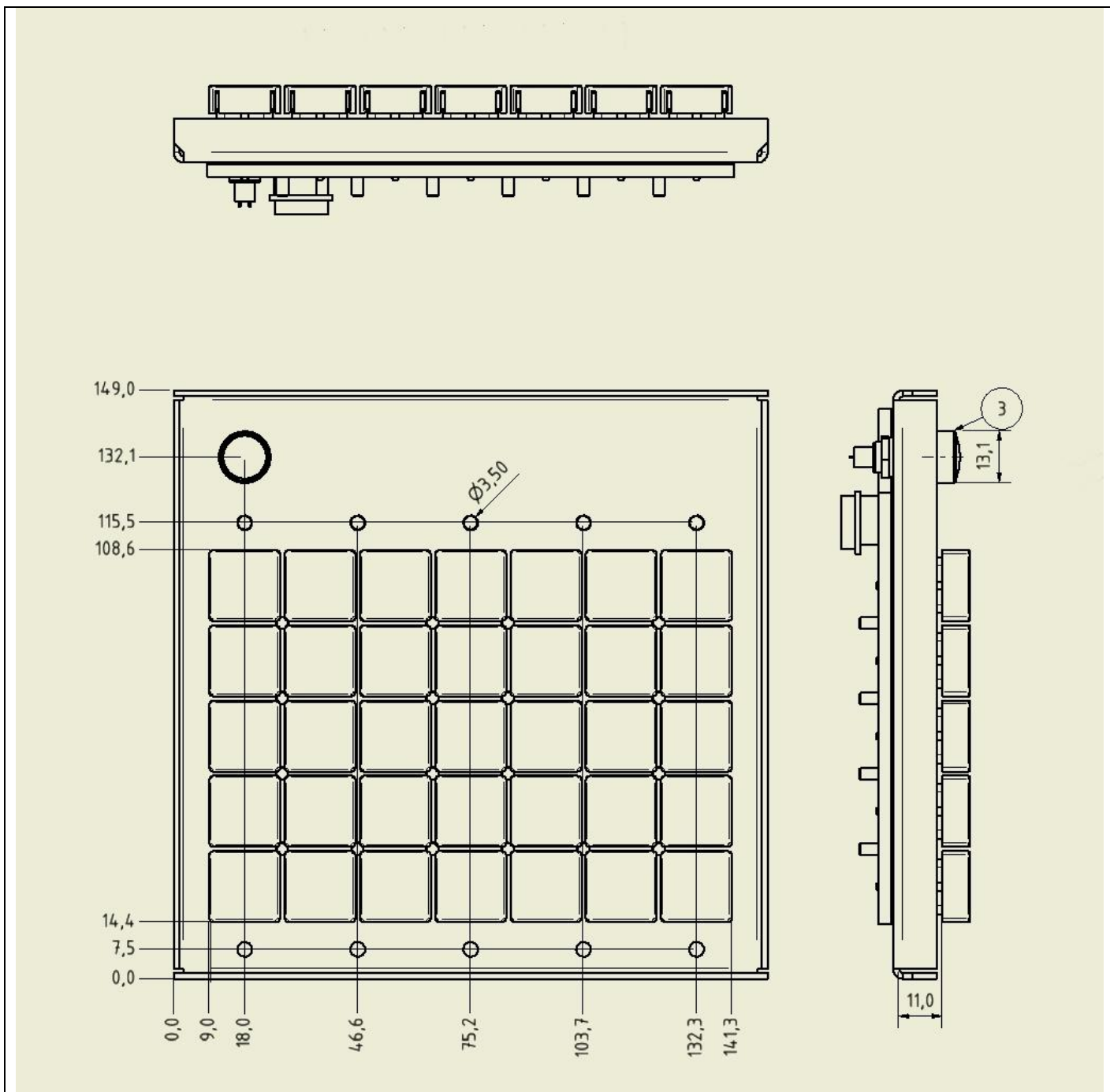
IK810LT-02 PS2 bracket device with pcb RR-P-246 back view

IK810LT-02 industry quality keyboard

Ob der Eck 4 · D-78148 Gütenbach · Telefon (07723) 9186-0 · Telefax (07723)9186-30

www.rurgmbh.de info@rurgmbh.de

DNR21279_E.DOC REV.01 05.07.1996



IK810LT-02 industry quality keyboard

Ob der Eck 4· D-78148 Gütenbach · Telefon (07723) 9186-0 · Telefax (07723)9186-30

www.rurgmbh.de info@rurgmbh.de

DNR21279_E.DOC REV.01 05.07.1996